



INTERNATIONAL OILFIELD EQUIPMENT BROKERS

#907, 825 – 8th Ave SW Calgary AB T2P 2T3
Website: www.oilfieldequipment.com

*World class integrated asset acquisition, management and recovery solutions
for the oil & gas industry*

Your International Sourcing and Sales Team

DALE RAWSON
CURTIS BLAIR
WADE MACKESY

Phone: (403) 299-2244
Fax: (403) 299-2245
Email: info@ioeb.ca

MARCH 2018 SELECTED ORPHAN WELL ASSOCIATION EQUIPMENT LISTINGS

Orphan Well Association currently has over 600 items listed in our online Surplus Equipment Catalog.
This flyer contains only a small number of listings. Please visit our online catalog at
www.oilfieldequipment.com

BUILDINGS



AMiCS #: 31435774
11.5' X 18', Skidded, MCC Building
- w/ PLCs, transformers & switchgear
- Skidded
- Foundation: gravel




AMiCS #: 31440108
14' x 10' Enviro Noise Control Sound Attenuation Skid
- Built 2004

31421917 Mocoat Wellhead Building
31421920 5' x7' Skidded, MCC / SCADA Building


TRUST. INTERNATIONAL.

COMPRESSORS


- 31421921 Ajax Gas Engine 2 Stage 2 Throw Ajax Compressor Skidded & Housed Pkg.
- 31440028 Arrow VRG-330 Gas Driver Sullair Compressor Skidded & Housed Pkg.
- 31438928 3 HP Baldor Electric Motor Eagle Air Compressor Housed Pkg.
- 31435770 95 HP Cat 3304 Gas Engine Gardner Denver Compressor Skidded & Housed Pkg.

	<p>AMiCS #: 31440020</p> <p>195 HP Cat 3306 TA Gas Engine Sullair PC-20L Compressor</p> <ul style="list-style-type: none"> - Built in 1999 - 2 Heaters - Skidded & Housed Pkg.
---	---


- 31439124 195 HP Cat 3306 Gas Engine Kobelco 19LL Compressor Skidded & Housed Pkg.
- 31439070 400 HP Cat Gas Engine 2 Stage 2 Throw Gemini Compressor Skidded & Housed Pkg.
- 31438718 600 HP Cooper Bessemer Gas Engine Cooper Bessemer Compressor Housed in Bldg.

	<p>AMiCS #: 31438930</p> <p>738 HP Waukesha Gas Engine Ariel JGH/4 Compressor</p> <ul style="list-style-type: none"> - Built in 2005 - 3 Stage 4 Throw - Skidded & Housed Pkg. 	SOLD!
--	---	--------------

FLARESTACKS

	<p>AMiCS #: 31438781</p> <p>Flare Stack w/ Underground Flare Knockout</p> <ul style="list-style-type: none"> - Condition: C
---	--

31438763 3" x 40' Flare Stack

	<p>AMiCS #: 31421919</p> <p>6"- 3" x 30' Flare Stack</p> <ul style="list-style-type: none"> - c/w Ignition and Pilot
---	---

31440079 6" - 4" x 40' Flare Stack



AMiCS #: 31439061
6"- 4" x 40' Flare Stack
- Manufacturer: Mactronic

FUEL GAS SCRUBBER

- 31422270 Compressor Fuel Gas Scrubber Vertical Skidded & Housed in Compressor Building
31423068 6" x 2' Vertical skidded & Housed in Separator Building
31422447 6 $\frac{5}{8}$ " x 2'9" Vertical 285 Psi @ 100 °F Skidded & Housed in Separator Building
31422803 8" x 2' Vertical 285 Psi @ 100 °F Skidded & Housed in Separator Building

MISCELLANEOUS

- 31439071 30,000 Gallon 250 Psi @ 115 °F LPG Bullet



AMiCS #: 31439138
8' x 40' Horizontal 200 Psi @ 250 °F Bullet
- Built by Enterprise Steel in 1997
- c/w Barton Chart Recorder
- Skidded Pkg.



AMiCS #: 31435778
36" x 6' Horizontal 250 Psi @ 212 °F Cyclone
- Built by Whaler Industrial
- 36" x 6' Horizontal 250 Psi @ 212 °F Degasser
- Skidded & Housed Pkg.

- 31421889 18" x 6' 100 Psi @ 257 °F Cansweet Chemical Sweetener Skidded & Housed Pkg.



AMiCS #: 31438785
6' x 20' Sweet Service 75 Psi @ 100 °F Free Water Knockout
- Built by C&T Equipment in 2008
- c/w 2" 600 Ansi Daniels Sr. Meterrun & Chart Recorder
- Skidded & Housed Pkg.

TRUST. INTERNATIONAL.

SERVING THE INTERNATIONAL OIL & GAS INDUSTRY FOR OVER 25 YEARS.

- 31435783 36" x 10' Horizontal Heat Trace Vessel Skidded & Housed Pkg.
- 31422790 Corlac Model: REX Hydraulic Skid w/ GM V-8 Gas Engine Skidded Pkg.
- 31439140 National Oilwell 60T-3 Triplex Pump Skidded & Housed Pkg.

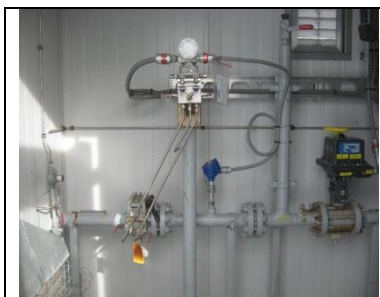


AMiCS #: 31438937

500,000 Btu/hr Line Heater

- Preheat: 3125 Psi, Reheat: 1622 Psi @ 200 °F
- Sour Service
- Built by A.T.I. Contracting in 2008

- 31439077 3" Daniels Sr. Meterrun w/ COE Recorder Skidded & Housed Pkg.



AMiCS #: 31430565

4' x 8', Meter Pkg.

- w/ 2" 600 Ansi Canalta Jr. Meterrun, Fisher Transmitter
- Skidded & Housed Pkg.
- Sweet Service

- 31421852 24" x 8' Horizontal 250,000 Btu/hr Insulated Glycol Reconcentrator, Skidded & Housed



AMiCS #: 31439069

Choke Plant

- Consist of Cold Separator, Separator and HC/Water Separator
- Built by Propak in 2011
- Skidded & Housed Pkg.

- 31421844 16' x 30' Propak Refrigeration Skid
- 31421849 Horizontal Insulated Chiller Skidded & Housed in Refrigeration Bldg.
- 31421851 Horizontal Insulated 1400 Psi @ 150 °F Gas/Gas Exchanger Skidded & Housed
- 31435804 30" x 13.5' Vertical 1400 Psi @ 100 °F V3 Test Vessel Housed in Knock Down Bldg.
- 31435807 42" x 180" Vertical 720 Psi @ 100 °F V-10 Nisku Group Separator Vessel Housed



AMiCS #: 31421853

10" x 28' Vertical 125 Psi @ 200 °F Condensate Stabilizer Tower

- Insulated
- Skidded & Housed in Refrigeration Building

- 31435794 6' x 20' Horizontal 50 Psi @ 200 °F V6 Treater Skidded & Housed Pkg.
- 31435793 6' x 22.5' Horizontal 50 Psi @ 200 °F V5 Test Treater Skidded & Housed Pkg.



AMiCS #: 31435782

8' x 30' Horizontal 50 Psi @ 200 °F V8 Group Treater

- Built by CE Natco in 1989
- 2" 150 Ansi Daniels Sr. Meterrun
- Skidded & Housed Pkg.

SOLD!

- 31434801 12" x 3' Horizontal 1440 Psi @ 100 °F Vessel Skidded & Housed in Compressor Building
- 31421847 20" x 48" Horizontal 300 Psi @ 150 °F Surge Tank Housed in Refrigeration Bldg.

PUMP JACKS

- 31438981 57/95/54 Parksburg Conventional
- 31439024 80/119/64 LSI Conventional w/ Arrow C-66 Gas Engine
- 31440072 114 Oilwell Conventional c/w Arrow C66 18 HP Gas Engine
- 31439104 114/143/74 Dominion Bridge Conventional w/ Arrow C66 Gas Engine
- 31422806 160 Universal Conventional



AMiCS #: 31439087

228/213/86 Lufkin Conventional

- w/ Arrow C96 Gas Engine
- Condition: C

SOLD!

- 31439057 228/213/100 Workhorse Conventional w/ Arrow C66 18 HP Gas Engine
- 31440052 320/256/120 Legrand Conventional
- 31438832 456/256/120 American Conventional
- 31440056 640/365/168 Lufkin Conventional

SEPARATORS

- 31439684 Suitcase Separator Skidded with Methanol Tank
- 31440058 2' x 5' Vertical 275 Psi @ 100 °F Skidded & Housed Pkg.



AMiCS #: 31439020

6" x 4' Sweet Service 2 Phase Vertical 1440 Psi Test Separator

- c/w 24" x 5' Sweet Service 2 Phase Vertical 125 Psi Separator
- 2" Meterrun w/ Barton Chart Recorder
- Trailer Pkg.

TRUST. INTERNATIONAL.

SERVING THE INTERNATIONAL OIL & GAS INDUSTRY FOR OVER 25 YEARS.



AMiCS #: 31440040

2 - 8" x 20" Sweet Service 2 Phase Vertical 850 Psi @ 100 °F (10 Available)

- Built by Flo Drip in 2005
- w/ 15 m3 Tank on Skid
- Skidded & Housed Pkg.

31422809 16" x 7'6" Sour Service 3 Phase Vertical 1400 Psi @ 100 °F Skidded & Housed Pkg.

31440106 16" x 7'6" Sweet Service 1480 Psi @ 100 °F Housed Pkg. w/ 100 BBL Tank on Skid

31421845 20" x 8' 3 Phase Vertical 1400 Psi @ 100 °F Refrig. Inlet Separator Skidded & Housed



AMiCS #: 31440095

24" x 8' Sour Service Vertical 740 Psi @ 100 °F

- Built by High Plains in 1996
- w/ 3" 300 Ansi Senior Daniels Meterrun & Barton Chart Recorder
- Skidded & Housed Pkg.



AMiCS #: 31440098

24" x 7'6" Sweet Service 2 Phase Vertical 430 Psi @ 200 °F

- Built by BS&S in 2003
- w/ 2" 600 Ansi Meterrun
- X-Ray: RT3

31440065 24" x 60" Sweet Service Vertical 250 Psi @ 100 °F Skidded & Housed Pkg.

31440054 30" x 8' Sweet Service Vertical 720 Psi @ 38 °C Skidded & Housed Pkg.

31421918 30" x 10' Sweet Service 3 Phase Vertical 1480 Psi @ 100 °F Skidded & Housed Pkg.



AMiCS #: 31440053

30" x 60" Sour Service Vertical 225 Psi @ 38 °C Skidded & Housed Pkg.

- Built by Larsen & D'amico in 1994
- w/ 2" 150 Ansi Meterrun & Barton Chart Recorder
- c/w 7 Well Header

TANKS

31439079 25 BBL Skidded Tank

31440051 30 BBL Single Wall Insulated Skidded Tank

31440090 100 BBL Single Wall Skidded Tank

For additional equipment listings go to www.oilfieldequipment.com

TRUST. INTERNATIONAL.

SERVING THE INTERNATIONAL OIL & GAS INDUSTRY FOR OVER 25 YEARS.



AMiCS #: 31440091
100 BBL Single Wall Skidded Tank
- Built by Prism Tanks
- Vent

- 31440112 100 BBL Double Wall Insulated Skidded Tank
- 31422461 200 BBL Double Wall Skidded Tank



AMiCS #: 31439550
210 BBL Single Wall Tank
- Built by GLM in 1993
- 1 Manway
- Painted

- 31440099 400 BBL Single Wall Internally Coated Skidded Tank
- 31422276 400 BBL Double Wall Insulated Skidded Produced Water Tank



AMiCS #: 31440088
400 BBL Double Wall Insulated Skidded Tank
- Built by Jensens in 2004
- 1 Manway
- Insulation Material: Foam

SOLD!

- 31440023 500 BBL Single Wall Tank
- 31440104 750 BBL Single Wall Internally Coated Tank
- 31438758 750 BBL Insulated Heated Produced Water Tank



AMiCS #:31440104
750 BBL Single Wall Internally Coated Tank
- Built by Hot Pass in 1997
- 1 Manway
- Thief Hatch

- 31435788 1000 BBL Insulated Nisku Water Tank

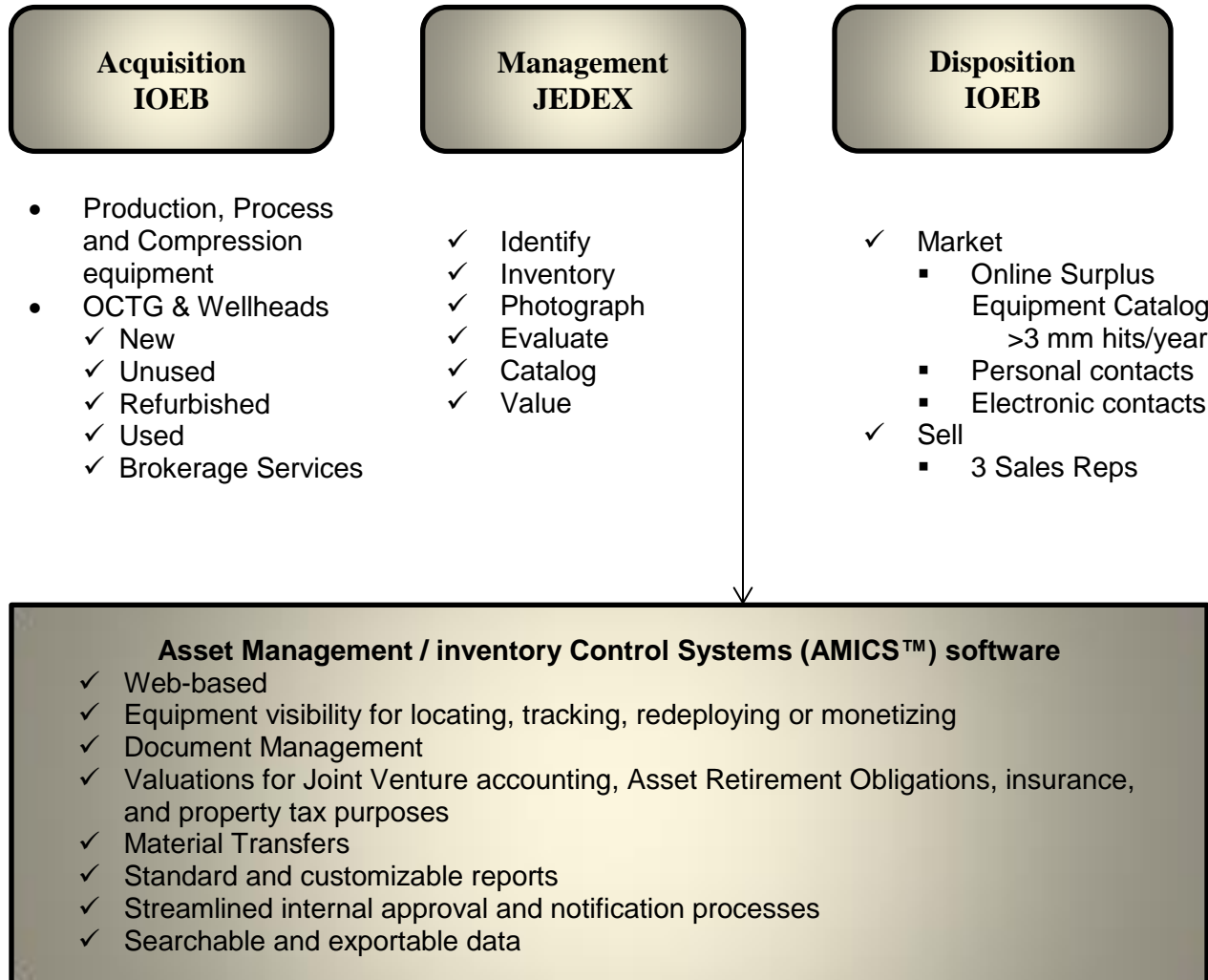


AMiCS #:31435789
2000 BBL Bottom Ring Insulated Cardium Water Tank
- Built in 1995

TRUST. INTERNATIONAL.

SERVING THE INTERNATIONAL OIL & GAS INDUSTRY FOR OVER 25 YEARS.

IOMS group provides seamless, horizontally integrated asset life cycle acquisition, management and recovery solutions for the oil and gas industry.



The International Oilfield Management Services group of companies is located in Calgary, Alberta and operates primarily in Western Canada. We are the world's largest integrated asset acquisition, management and recovery solutions provider in the oil and gas industry, and can help with all your oil and gas equipment needs.

Want to know more? Contact us today!

Phone: (403) 299-2244 Fax: (403) 299-2245 Email: info@ioeb.ca