

INTERNATIONAL OILFIELD EQUIPMENT BROKERS

235130 Wrangler Drive SE RR5 Rocky View County AB T1X 0K3
Website: www.oilfieldequipment.com

*World class integrated asset acquisition, management and recovery solutions
for the oil & gas industry*

Your International Sourcing and Sales Team

DALE RAWSON
TOM MEALEY
STEVE HAYDUK

CURTIS BLAIR
DANE URQUHART

ROBERT SIROISHKA
GRADY MATHIESON

Phone: (403) 299-2244
Fax: (403) 299-2245
Email: ioeb@ioeb.ca

DECEMBER 2015 SELECTED EQUIPMENT LISTINGS

We currently have over 1,300 items listed in our online Surplus Equipment Catalog. This flyer contains only a small number of listings. Please visit our online catalog at www.oilfieldequipment.com

BUILDINGS

- 31436076 Header Building, Skidded & Housed Pkg.
31425812 2' x 11', Mocoat Fiberglass Wellhead Shelter

COMPRESSORS

AMiCS #: 31435739

100 HP, Westinghouse Electric 1 Stage 2 Throw Ariel JGP/2 Compressor, Skidded & Housed Pkg.



TRUST. INTERNATIONAL.

TRUST. INTERNATIONAL.

SERVING THE INTERNATIONAL OIL & GAS INDUSTRY FOR OVER 25 YEARS.



AMiCS #:31436679

99 HP, Cummins G8.3C 3 Stage 2 Throw Gemini H302 Compressor

- Built in 2007
- Sweet Service
- Skidded & Housed Pkg.

- 31430453 195 HP, Cat 3306 TA Gas Engine Sullair Compressor, Skidded & Housed Pkg.
- 31424502 215 HP, Cat 3406 NA 2 Stage 2 Throw Gemini Compressor, Skidded & Housed Pkg.
- 31424745 325 HP, Cat 3406 TA Gas Engine Frick Compressor, Skidded & Housed Pkg.
- 31435718 400 HP, Cat 3408TAW 3 Stage 4 Throw Gemini Compressor, Skidded & Housed Pkg.



AMiCS #:31436677

860 HP, Cat G3512LE-AFRC Gas Engine Frick Compressor

- Built in 2006
- Sweet Service
- Skidded & Housed Pkg.

- 31436673 860 HP, Cat 3512TAW-AFR Gas Engine Gemini Compressor, Skidded & Housed Pkg.
- 31436672 1478 HP, Waukesha 2 Stage 4 Throw Gemini Compressor, Skidded & Housed Pkg.



AMiCS #:31430546

Ariel JGK/6 6 Throw 6 Stage Acid Gas Compressor

- Built in 2010
- Sour Service
- Hyundai 2000 HP, 2000 RPM, electric motor

- 31429152 Waukesha P-9390 4 Stage 4 Throw Ingersoll Rand Compressor, Knock Down Building.

DEHYDRATORS

- 31407641 16" x 24', 6 Tray Tower, 1300 Psi, 180,000 Btu/hr, Skidded & Housed Pkg.
- 31436698 20" x 28', 8 Tray Tower, 1440 Psi @ 130° F, Skidded & Housed Pkg.



AMiCS ID #: 31429156

30" x 30'(Est.), 8 Tray Tower, 655 Psi @ 151° F, Skidded & Housed

- Built by Propak in 1992
- Housed in Knock Down Building
- Integrated Separator

FLARESTACKS

- 31436461 3" x 40' Flare Stack
- 31435810 6" x 40' (Est.) Vent Stack
- 31436083 8" x 36' (Est.) Flare Stack
- 31427533 10" x 65' Self-Supported Flare Stack c/w 10" Inlet Connection

LINE HEATERS



AMiCS #:31427683
9' x 34', 4570 Psi, 3916 Psi @ 250° F, 5,000,000 Btu/hr
 - Built by Orban in 2006
 - Sour Service
 - Skidded & Housed Pkg.

- 31436349 30" x 8', 3375 Psi @ 200° F, 500,000 Btu/hr, Skidded Pkg.



AMiCS #:31436349
30" x 8', 3375 Psi @ 200° F, 500,000 Btu/hr, Skidded Pkg.
 - Built by Priority in 2002
 - 8 Pass
 - Condition: C

METER PACKAGES

- 31436709 2" 600 Ansi Daniels Jr. Meterrun, w/ Zedi Transmitter
- 31431938 2' x 4' Tornado Meter Pkg., w/ 2" Sureflo Meterrun, Skidded & Housed Pkg.
- 31436314 2' x 6' Meter Pkg., w/ 2" Northstar Meterrun, Skidded & Housed Pkg.
- 31435732 6' x 10' Meter Pkg., w/ 3" Meterrun, Barton Recorder, Skidded & Housed Pkg.



AMiCS #:31427661
12' x 10' Meter Pkg., c/w 2" and 4" 600 Ansi Daniel Sr. Meterrun
 - Built by Rushton in 2008
 - Sour Service
 - Skidded & Housed Pkg.

- 31435722 Dual Meter Pkg., w/ 2 – 2" 300 Ansi Northstar Meterruns, Skidded & Housed Pkg.

MISCELLANEOUS



AMiCS #: 31407646

(2) – 16” x 8’, Sour Service, 1440 Psi, Filter Separators

- Built by Oilpro in 2003
- Skidded & Housed in Header Building

31427570 10.75” x 8’4”, 1420 Psi @ -20/130° F, Coalescer Skid Pkg.

31436082 25 BBL Flare KO

31435133 50 BBL Underground Flare KO

31436693 Arrow C-96 Gas Engine



AMiCS #: 31434417

2 – Wood Group / GE Oil & Gas, Full AR Injection Pumps

- 2 Toshiba 600 HP Electric Motors
- Skidded & Housed Pkg.

31435721 16” x 8’, Horizontal, Heat Medium, Skidded & Housed Pkg.

31418335 30” x 24’, 1,500,000 Btu/hr, Insulated, Heat Medium, Skidded Pkg.

31436704 Corlac REX, Hydraulic Skid w/ GM 4.3L Gas Engine

31436714 Hydraulic Skid w/ GM 5.7L Gas Engine

31427635 30” x 41’, Incinerator

31425989 0.5 MMCF/D – 4.5 MMMCF/D, Gas Refrigeration Plant, Skidded & Housed Pkg.



AMiCS #: 31427146

4.9m x 16.1m, 8 MMSCFD/D, 1050 Psi Refrigeration Plant

- Built by Propak in 2005
- Skidded & Housed Pkg.

31436722 30 MMSCF/D, Propak Refrigeration Skid

31436658 Goose Neck Tandem Axle Trailer



AMiCS #: 31436646

Coil Tubing Unit Mounted on Single Drop Tri-Axle Trailer

- Built by Hydraco Industries in 2000
- Air Compressor Skid Mounted

TRUST. INTERNATIONAL.

SERVING THE INTERNATIONAL OIL & GAS INDUSTRY FOR OVER 25 YEARS.

- 31436733 Tailings Oil Analyzer, Skidded & Housed Pkg.
- 31436702 Kudu VHGH-60, Top Drive
- 31436330 6' x 15', Sweet Service, Horizontal, 25 Psi @ 200° F, Treater Skidded & Housed Pkg.
- 31436230 60" x 12', Sweet Service, Horizontal, 50 Psi @ 150° F, Treater Skidded Pkg.
- 31435753 60 mm x 108 mm Union 28.4 m3/hr Quintiplex Pump w/ 150 HP Electric Motor
- 31430875 Hydracell 4 gpm @ 700 kPa Discharge, Injection Pump, Skidded Pkg.

PUMP JACKS

- 31436713 Golden Rod Hydraulic Pump Jack
- 31436716 Golden Rod GR 20.120 Hydraulic Pump Jack
- 31425795 80/133/54, American, Conventional
- 31425793 114/143/64, LSI, Conventional
- 31425789 114/143/64, National, Conventional



AMiCS #: 31436328

160/143/64, American, Conventional

- Arrow C-66 Gas Engine
- Condition: C

- 31436296 160/173/86, Dominion Bridge, Conventional, w/ Westinghouse 20 HP Electric Motor
- 31436670 160/200/74, w/ 7.5/10/15 HP Electric Motor, on Cement Base



AMiCS #: 31436731

228/213/86, American, Conventional

- Eurodrive 20 HP, Electric Motor
- Condition: C

- 31436729 228/246/86, National, Conventional, w/ Arrow C-66 Gas Driver
- 31436453 320/213/120, Lufkin, Conventional, w/ Toshiba, 50/40/30 HP, Electric Motor
- 31436454 320/256/120, Ampscot, Conventional, w/ Toshiba, 50/40/30 HP, Electric Motor
- 31436214 456/365/120, Lufkin, Conventional, w/ Arrow Gas Engine



AMiCS #: 31435747

456/305/168, Sentry, Conventional, w/ 40 HP Electric Motor

- c/w Cement Base, Sleeper Base, 6,000 lb ECB
- Condition: B

- 31436217 640/305/144, Lufkin, Conventional, w/ Gas Engine

SEPARATORS

31435470 8" x 39", Sweet Service, 1440 Psi @ 130° F, Vertical, Skidded & Housed Pkg.

31430423 8" x 48", Sweet Service, Vertical, 1480 Psi @ 100° F, w/ 30 BBL Tank on Skid



AMiCS #: 31436193

- 2 – 10" x 20", Sweet Service, 2 Phase, Vertical, 850 Psi @ 100° F**
- w/ 13 m3 Plastic Tank on Skid
 - Skidded & Housed Pkg.

31436304 12" x 6', Sweet Service, 2 Phase, Vertical, 1480 Psi @ 100° F, Skidded & Housed Pkg.



AMiCS #:31436197

- 12.75" x 4', Sweet Service, 2 Phase, Vertical, 720 Psi @ 129° F**
- Built by RJV in 2005
 - w/ 15,000 L Double Wall Tank on Skid
 - Skidded & Housed Pkg.

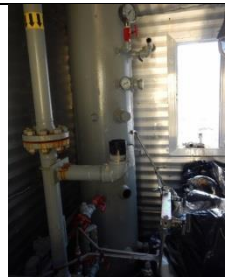
31436200 12.75" x 7.5', Sweet Service, 2 Phase, 720 Psi @ 100° F, Skidded & Housed Pkg.



AMiCS #:31436645

- 16" x 5', Sweet Service, Vertical, 1480 Psi @ 100° F**
- Built by IPS in 2006
 - 2" 600 Ansi Daniels Sr. Meterrun w/ Barton Chart Recorder
 - Packaged on Trailer for Mobile Well Testing

31436087 16" x 5', Sour Service, 2 Phase, 250 Psi @ 100° F Sep, 250 Psi @ 200° F Lineheater



AMiCS #:31435727

- 16" x 7.5', Sweet Service, 3 Phase Dressed 2, Vertical, 740 Psi @ 100° F**
- Built by Nusco in 2000
 - w/ 200 BBL, Insulated Tank on Skid
 - Skidded & Housed Pkg.

31430455 16" x 7'6", 2 Phase, Vertical, 740 Psi, Skidded & Housed Pkg.



AMiCS #:31436456

- 24" x 5', Sweet Service, 2 Phase, Vertical, 720 Psi @ 100° F**
- Built by Argo Sales in 1997
 - 2" 300 Ansi Meterrun w/ Barton Chart Recorder
 - Skidded & Housed Pkg.

TRUST. INTERNATIONAL.

SERVING THE INTERNATIONAL OIL & GAS INDUSTRY FOR OVER 25 YEARS.

- 31436643 24" x 5', Sweet Service, Vertical, 1440 Psi @ 100° F, Skidded & Housed Pkg.
- 31436699 24" x 8', Sweet Service, 2 Phase, Vertical, 1440 Psi @ 100° F, Skidded & Housed Pkg.
- 31436849 30" x 10', Sweet Service, Vertical, 1440 Psi, Skidded & Housed Pkg. (5 Available)
- 31436696 36" x 8', Sweet Service, 3 Phase, Horizontal, 1440 Psi @ 100° F, Skidded & Housed Pkg.



AMiCS #:31435221

36" x 10', Sweet Service, 2 Phase, Horizontal, 720 Psi @ 100° F

- Built by Petro Crafts in 1994
- Package Size: 8' x 16'
- Skidded & Housed Pkg.

TANKS

- 31436259 15 m3, Single Wall, Plastic Tank
- 31436710 30 BBL, Skidded, Insulated, Tank
- 31436229 50 BBL, Double Wall, Insulated, Skidded Tank
- 31436243 100 BBL, Single Wall, Skidded, Pop Tank
- 31436852 100 BBL, Double Wall, Insulated, Skidded Tank.



AMiCS #:31436309

100 BBL, Double Wall, Insulated, Internally Coated, Skidded Tank

- Built by Panax in 2006
- Foam Insulation

- 31430494 100 BBL, Internally Coated, Storage Tank
- 31407540 100 BBL, Horizontal, Skidded & Housed, Water Tank
- 31436851 200 BBL, Single Wall, Tank
- 31436307 210 BBL, Single Wall, Heated, Skidded, Tank



AMiCS #:31436719

390 BBL, Single Wall, Insulated, Skidded Tank

- Built by Total Tank Solutions in 2012
- Painted, Thief Hatch, Foam Insulation
- Second Containment Type: Berm

- 31436853 2 – 400 BBL, Single Wall, Skidded, Tank
- 31436236 400 BBL, Single Wall, Skidded, Salt Water Tank
- 31436728 400 BBL, Double Wall, Insulated, Skidded Tank
- 31436216 750 BBL, Single Wall, Insulated Tank

TRUST. INTERNATIONAL.

SERVING THE INTERNATIONAL OIL & GAS INDUSTRY FOR OVER 25 YEARS.

Services offered by International Oilfield Management Services Group of Companies



The International Oilfield Management Services group of companies is located in Calgary, Alberta and operates primarily in Western Canada. We are the world's largest integrated asset acquisition, management and recovery solutions provider in the oil and gas industry, and can help with all your oil and gas equipment needs.

Through our various divisions we provide:

- A. Oilfield equipment and drilling materials (casing, wellheads, float equipment and production tubing) and services
- B. Production and processing equipment acquisition and disposition services
- C. Inventory, management, valuation and redeployment services
- D. Equipment appraisal services
- E. Supply chain services
- F. Equipment financing services

We incorporate industry best practices in full cycle asset recovery into our processes to ensure we eliminate personal bias and provide only objective findings that will withstand stakeholder scrutiny. We follow a proven, sustainable, repeatable, scalable and defensible methodology for project scoping, definitions, data collection, valuation, asset management, internal redeployment and external sales.

We can assist with sizing, design and feature suggestions for the oil and gas production assets your company may require. We also provide complete supply chain services, including review of your existing idle and surplus assets for redeployment. If no existing assets are suitable for the required project we will then review surplus assets from other owners, and, if required, we will source new equipment via bidding, bid evaluation, suggested vendors, and vendor evaluation services for your procurement requirements.

Want to know more? Contact us today!

Phone: (403) 299-2244 Fax: (403) 299-2245 Email: ioeb@ioeb.ca